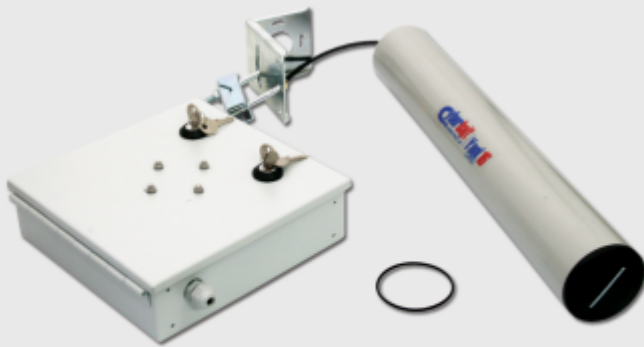




directional antenna

# Yagi 16dBi + outdoor enclosure



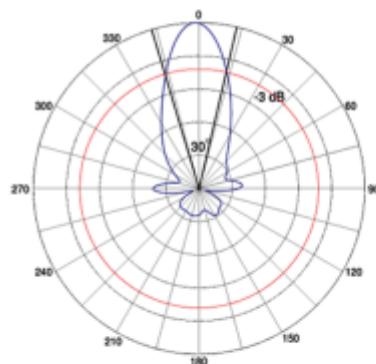
Directional antenna of 16 dBi gain, designed to work on 2,4 GHz band. It works with base stations of any polarization. Antenna is used to create point to point links as well.

High selectivity of polarization enables antenna to work by large noise and in case of reflecting electromagnetic wave.

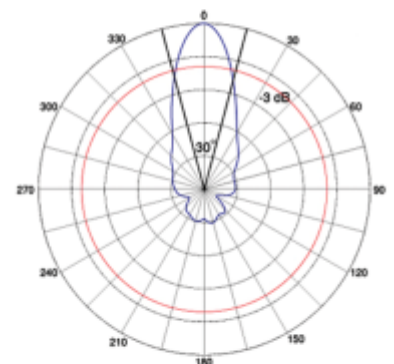
The outdoor enclosure is designed to mount a devices on mast with antenna, what enables user to maximal make cable shorter.

Using of enclosure does not exclude adjustment of antenna inclination angle.

Horizontal Beamwidth



Vertical Beamwidth



# antennas 2.4 GHz client

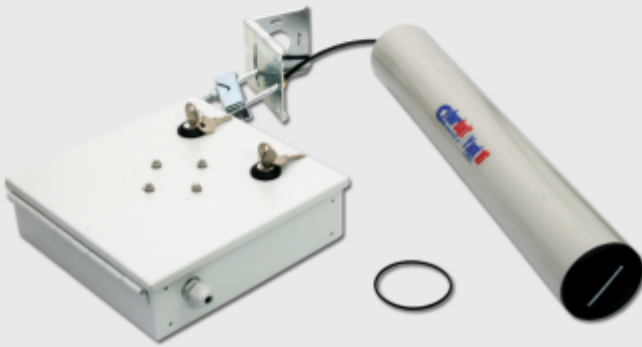


**directional antenna**

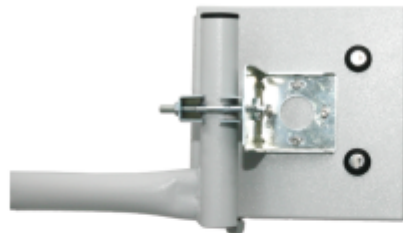
# Yagi 16dBi + outdoor enclosure

## specifications

Gain  
**16 dBi**  
Frequency  
**2400 - 2500 MHz**  
Polarization  
**vertical or horizontal**  
Backward Radiation  
**n/a**  
Vertical Beamwidth  
**24°**  
Horizontal Beamwidth  
**30°**  
VSWR  
**1 to 1,4**  
Impedance  
**50 Ohm**  
Connector  
**N/Male type**  
Dimensions  
**520/φ 75 mm (210/210/50mm)**  
Weight  
**800 g**  
Mounting Kit  
**diameter 30-50 mm**  
Wind Loading  
**85 m/s**  
Warranty  
**36 months**



Mounting kit



Adjustment



# antennas 2.4 GHz client