



panel antenna

## GigaEter 13

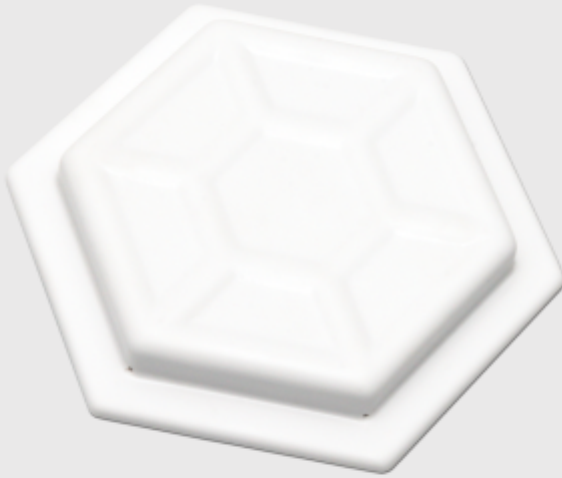
Client antenna of 13 dBi gain and very high wind loading – up to 110 m/s. It work on vertical or horizontal polarization.

The antenna is designed to create links for a little distances what enables its to avoid overcontrol radio channel effect.

Additionally it has stable mounting set and a small dimensions.

The GigaEter 18 is ideal client antenna for the Tsunami and MikroTik OS and for other devices, which work on 5 GHz band.

It is also used for point to point type connections.



**antennas**  
**5 GHz client**

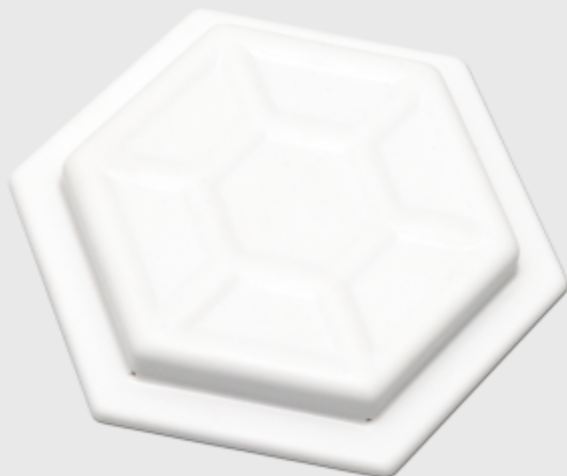


panel antenna

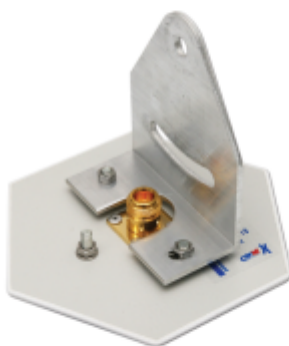
# GigaEter 13

## specifications

Gain  
**13 dBi**  
Frequency  
**5450 - 5750 MHz**  
Polarization  
**vertical or horizontal**  
Backward Radiation  
**n/a**  
Vertical Beamwidth  
**33°**  
Horizontal Beamwidth  
**33°**  
VSWR  
**1 to 1,4**  
Impedance  
**50 Ohm**  
Connector  
**N/Female type**  
Dimensions  
**140/123/17 mm**  
Weight  
**150 g**  
Mounting Kit  
**diameter 38-51 mm**  
Wind Loading  
**110 m/s**  
Warranty  
**36 months**



Mounting kit



Adjustment



**antennas**  
**5 GHz client**