



panel antenna

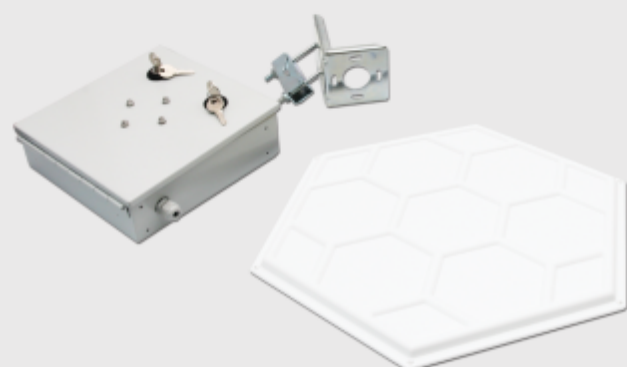
GigaEter 23 + outdoor enclosure

Client antenna of high 23 dBi gain by small beamwidth, designed to work on 5 GHz band. It is used to create hard links and connections for a large distances.

The GigaEter 23 antenna has stable mounting set and high wind loading. It is ideal client antenna for the Tsunami and MikroTik OS. It is also used to create point to point links.

The set includes outdoor enclosure as well, which is used to mount device with antenna to mast, what enables user to make cable shorter maximally.

Using of enclosure does not exclude adjustment of tilt angle antenna.



antennas
5 GHz client

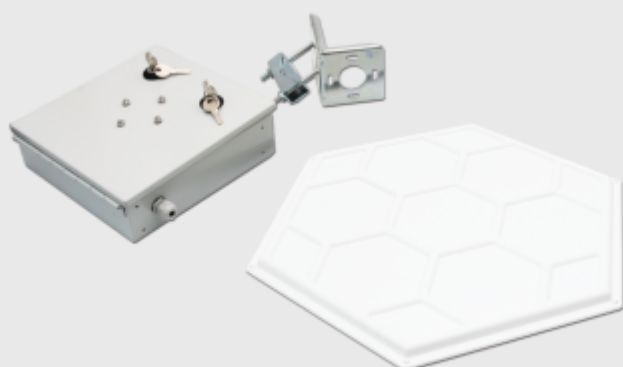


panel antenna

GigaEter 23 + outdoor enclosure

specifications

Gain
23 dBi
Frequency
5450 - 5750 MHz
Polarization
vertical or horizontal
Backward Radiation
n/a
Vertical Beamwidth
10°
Horizontal Beamwidth
10°
VSWR
1 to 1,4
Impedance
50 Ohm
Connector
N/Female type
Dimensions
390/430 mm
Weight
1800 g
Mounting Kit
diameter 38-51 mm
Wind Loading
85 m/s
Warranty
36 months



Mounting kit



Adjustment



antennas
5 GHz client