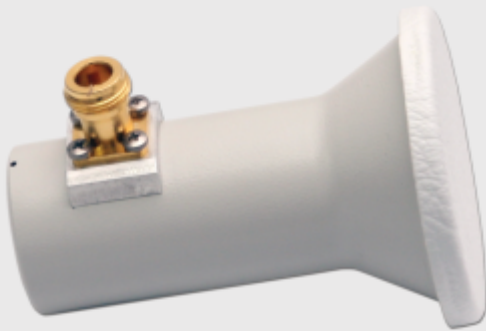




5GHz Feed element

Feed element for offset and parabolic dishes of 10,5 dBi gain.

It is designed to work on the band which is used by European versions of the Tsunami MP11a devices.

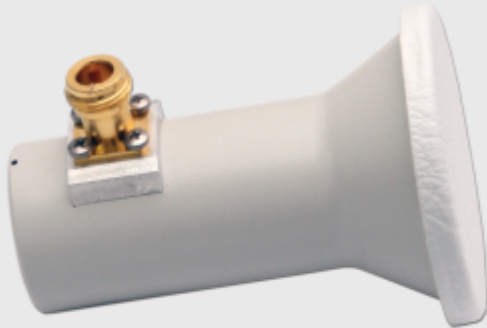




5GHz Feed element

specifications

Gain
10,5 dBi
Frequency
5500 - 5650 MHz
VSWR
1 to 1,5
Impedance
50 Ohm
Connector
gilded N/Female type
Mounting Kit
40 mm
Warranty
36 months



antennas
5 GHz client