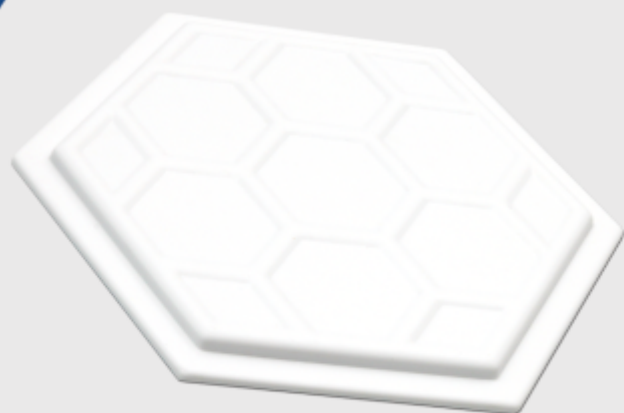




panel antenna

GigaEter 18 6GHz



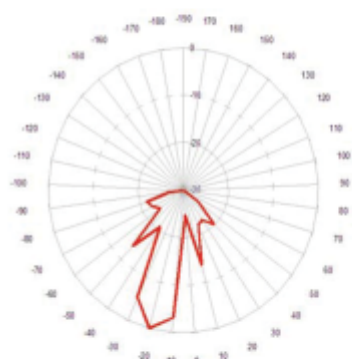
Panel antenna of vertical or horizontal polarization and 18 dBi gain, designed to work on 5,9 – 6,1 GHz.

It is used to work as client antenna or to create point-to-point links.

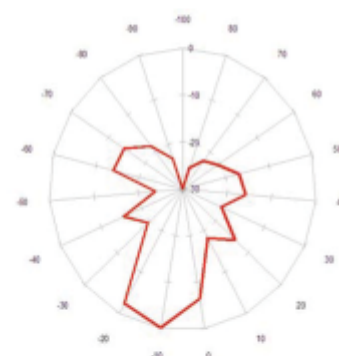
Depending on mounting way, the antenna is able to work on horizontal or vertical polarization.

The antenna has closed circuit for DC.

Horizontal
Beamwidth



Vertical
Beamwidth

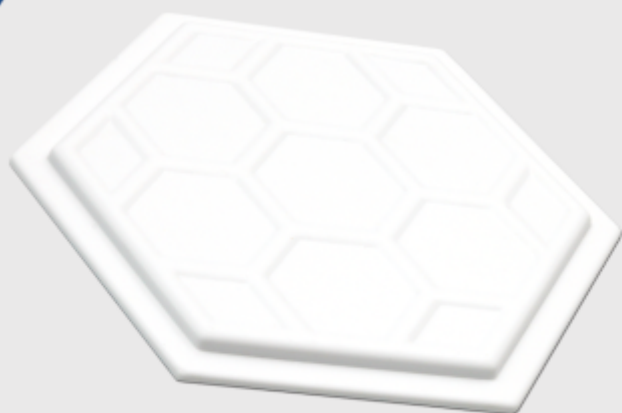


antennas
6 GHz



panel antenna

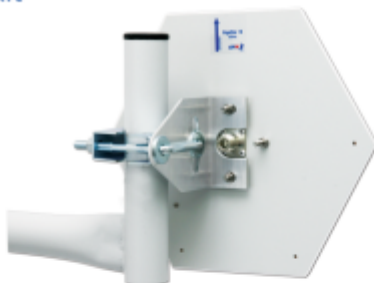
GigaEter 18 6GHz



specifications

Gain
18 dBi
Frequency
5900 - 6100 MHz
Polarization
vertical or horizontal
Backward Radiation
n/a
Vertical Beamwidth
16°
Horizontal Beamwidth
16°
VSWR
1 to 1,4
Impedance
50 Ohm
Connector
N/Female type
Dimensions
270/230/12 mm
Weight
400 g
Mounting Kit
diameter 38-51 mm
Wind Loading
90 m/s
Warranty
36 months

Mounting kit



Adjustment



antennas
6 GHz